



स्थापना - १९७०

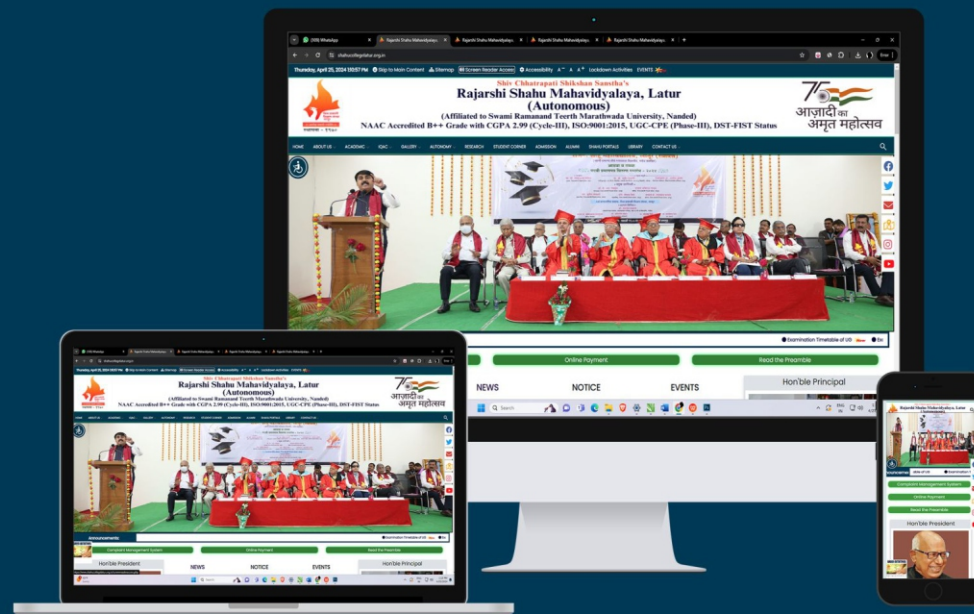


Shiv Chhatrapati Shikshan Sanstha's Rajarshi Shahu Mahavidyalaya, Latur (Autonomous)

DEPARTMENT OF INFORMATION TECHNOLOGY

Website

Design and Development



www.shahucollegelatur.org.in



The HyperText Markup Language or HTML, is the standard markup language for documents designed to be displayed in a web browser. It can be assisted by technologies such as Cascading Style Sheets and scripting languages such as JavaScript.

CSS

Cascading Style Sheets is a style sheet language used for describing the presentation of a document written in a markup language such as HTML or XML. CSS is a cornerstone technology of the World Wide Web, alongside HTML and JavaScript.



Mrs. Manjusha Shinde
Website Developer





Index

Sr. No.	Particulars	Page no.
1	Website Hosting Details	1
2	Our Interns	2
3	Digital Teaching Diary	3
4	Dashboard: Digital Teaching Diary	4
5	Activity Monitoring Portal	5
6	Alumni Registration Form	6
7	RSML Wise Vision Blogs	7
8	RSM Certification Courses	8
9	Complaint Management System	9
10	RSML News	10
11	College Prospectus	11
12	College Magazine	12
13	e-Learning Resources	13
14	Green Initiatives	14
15	Health & Wellness	15
16	Mail US	16
17	Site Map	17
18	Reach US	18
19	Admission / Registration	19
20	Student Corner	20
21	Virtual Tour	21
22	Lockdown Activities	22
23	We In Society	23
24	Divyangjan: Screen reader access	24





Website Hosting Details

Domain	: www.shahucollegelatur.org.in/
Hosting Provider	: GoDaddyInc.
Data Center	: Asia
Hosting Plan	: Windows Hosting Ultimate
Operating System	: Windows
Monthly Bandwidth	: Unlimited
Total Disk Space	: Unlimited
MySQL Databases	: Unlimited
SSL Certificate	: Standard SSL Certificate
Certificate Issuer	: GoDaddy SHA-2
Control Panel and Admin	: Plesk Admin Control Panel (WebHostEdition)
Website security and Backups	: Website Security Basic Plan
Frontend Technologies	: HTML5, CSS3, Bootstrap5, JavaScript, PHP7.3.33
Backend Technologies	: SQL, MySQL Database
SMTP Accss	: Yes
FTPAccess	: Yes



Our Interns



Rushikes Gunale
(2018-19)



Omkar Bolshette
(2018-19)



Pruthva Mandvekar
(2018-19)



Rahim Fakir
(2019-20)



Jayesh Birajdar
(2020-21)



Yogesh Mane
(2021-22)



Sumit Pendharkar
(2021-22)



Siddhi Attal
(2021-22)



Rohit Pendharkar
(2022-23)



Sudhir Kale
(2022-23)



Ashutosh Pichare
(2022-23)



Dhiraj Gaikwad
(2023-24)



Atharv Patil
(2023-24)



Riya Bhanushali
(2023-24)



Nikhil Gaikwad
(2023-24)



Digital Teaching Diary

[Sitemap](#) [Screen Reader Access](#) [Accessibility](#) [Lockdown Activities](#) [EVENTS](#)



Shiv Chhatrapati Shikshan Sanstha's
Rajarshi Shahu Mahavidyalaya, Latur
(Autonomous)

(Affiliated to Swami Ramanand Teerth Marathwada University, Nanded)

NAAC Accredited B++ Grade with CGPA 2.99 (Cycle-III), ISO:9001:2015, UGC-CPE (Phase-III), DST-FIST Status



[HOME](#) [ABOUT US](#) [ACADEMIC](#) [IQAC](#) [GALLERY](#) [AUTONOMY](#) [RESEARCH](#) [STUDENT CORNER](#) [ADMISSION](#) [ALUMNI](#) [SHAHU PORTALS](#) [LIBRARY](#) [CONTACT US](#)



Home › Digital Teaching Diary

Digital Teaching Diary 2023-24



User Login



Admin Login





Dashboard : Digital Teaching Diary



RSML

Dashboard

Teaching Report

Print Report

Edit / Delete

Leave Report

Upload Reports

Create New

Teaching Plan

Individual Timetable

Monthly Attendance

Syllabus Reports

Achievements

Academic Calendar

College Magazine

Profile

Manage Passwords

Logout

Search...



Dashboard | Digital Teaching Diary 2023-24

Welcome, Prof. Manjusha Anant Shinde!



Teaching Report



Print Report



Edit Entries



Delete Entries



Leave Report



Upload Reports

Uploaded Reports

Teaching Reports



Attendance Reports



Teaching Plan



Individual Timetable

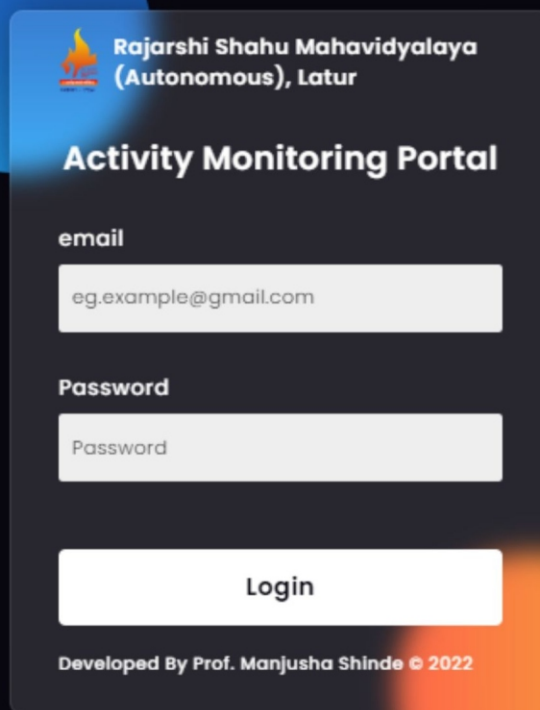


Copyright © 2023 | Rajarshi Shahu Mahavidyalaya, Latur (Autonomous) | Developed by Prof. Manjusha Shinde





Activity Monitoring Portal



The login form is a dark grey rectangular box with rounded corners, centered on a dark blue background. It features a blue circle on the left and an orange circle on the right. The form contains the following elements:

- Header:** A small orange flame logo followed by the text "Rajarshi Shahu Mahavidyalaya (Autonomous), Latur".
- Title:** "Activity Monitoring Portal" in bold white text.
- Email Field:** Labeled "email" in white, with a text input box containing the placeholder "eg.example@gmail.com".
- Password Field:** Labeled "Password" in white, with a text input box containing the placeholder "Password".
- Login Button:** A white rectangular button with the text "Login" in black.
- Footer:** "Developed By Prof. Manjusha Shinde © 2022" in small white text.



Alumni Registration Form



SHAHU MAHAVIDYALAYA ALUMNI
ASSOCIATION, LATUR
SMAAL

ALUMNI REGISTRATION FORM

Full Name

Email ID

Mobile Number

Residential Address

Year of Passing:

Select Year

Select Your Faculty:

Passout Degree

Your Occupation

Upload your Photograph

Choose File

No file chosen

8051

Enter the code shown above:





RSML Wise Vision Blogs



Shiv Chhatrapati Shikshan Sanstha's
Rajarshi Shahu Mahavidyalaya, Latur
(Autonomous)

(Affiliated to Swami Ramanand Teerth Marathwada University, Nanded)

NAAC Accredited B++ Grade with CGPA 2.99 (Cycle-III), ISO:9001:2015, UGC-CPE (Phase-III), DST-FIST Status



WISEVISION

HOME

REGISTER ▾

CATEGORY ▾

ADD POST

CONTACT

EMBRACING THE FUTURE OF EDUCATION :



POSTS / BLOGS

Students can post the doubts or queries related to their respective subjects. They can share their ideas or views with other students. Also the interaction between the students and teachers will be great.

[Read more >](#)



STUDENTS WELFARE

Students can post the doubts or queries related to their respective subjects. They can share their ideas or views with other students. Also the interaction between the students and teachers will be great.

[Read more >](#)



ENHANCE COURAGE

Students can post the doubts or queries related to their respective subjects. They can share their ideas or views with other students. Also the interaction between the students and teachers will be great.

[Read more >](#)

Why Wise Vision ?

Wise vision Quotes





RSML MOOCs(Online Certification Courses)



Information Technology plays a vital role in today's personal and not-for-profit uses. The Information Technology certificate program provides students with essential skills in operating systems, network communication, and information security. Students learn how to apply these technology concepts to systems in the workplace and integrated cloud systems.

[View Course](#)

Programming Concepts of Python **New**
Programming in C# .NET **New**
Computer Networking Concepts **New**



Commerce is the exchange of goods or services among two or more parties. It is the subset of business that focuses on the sale of finished or unfinished products rather than their sourcing, manufacturing, transportation, or marketing.

[View Course](#)

Stock Market Operation **New**



Complaint Management System

[Sitemap](#) [Screen Reader Access](#) [Accessibility](#) [Lockdown Activities](#) [EVENTS](#)



Shiv Chhatrapati Shikshan Sanstha's
Rajarshi Shahu Mahavidyalaya, Latur
(Autonomous)

(Affiliated to Swami Ramanand Teerth Marathwada University, Nanded)

NAAC Accredited B++ Grade with CGPA 2.99 (Cycle-III), ISO:9001:2015, UGC-CPE (Phase-III), DST-FIST Status



[HOME](#) [ABOUT US](#) [ACADEMIC](#) [IQAC](#) [GALLERY](#) [AUTONOMY](#) [RESEARCH](#) [STUDENT CORNER](#) [ADMISSION](#) [ALUMNI](#) [SHAHU PORTALS](#) [LIBRARY](#) [CONTACT US](#)



Home › Complaint Management System Login

Complaint Management System Login



User Login



Admin Login





RSML News

[Sitemap](#) [Screen Reader Access](#) [Accessibility](#) [Lockdown Activities](#) [EVENTS](#)



Shiv Chhatrapati Shikshan Sanstha's Rajarshi Shahu Mahavidyalaya, Latur (Autonomous)

(Affiliated to Swami Ramanand Teerth Marathwada University, Nanded)
NAAC Accredited B++ Grade with CGPA 2.99 (Cycle-III), ISO:9001:2015, UGC-CPE (Phase-III), DST-FIST Status



[HOME](#) [ABOUT US](#) [ACADEMIC](#) [IQAC](#) [GALLERY](#) [AUTONOMY](#) [RESEARCH](#) [STUDENT CORNER](#) [ADMISSION](#) [ALUMNI](#) [SHAHU PORTALS](#) [LIBRARY](#) [CONTACT US](#)

[Home](#) [Shahu News](#)

Welcome to Shiv Chhatrapati Shikshan
Sanstha's Rajarshi Shahu Mahavidyalaya
(Autonomous), Latur

The RSML News Channel

Number





College Prospectus

[Sitemap](#) [Screen Reader Access](#) [Accessibility](#) [Lockdown Activities](#) [EVENTS](#)



Shiv Chhatrapati Shikshan Sanstha's Rajarshi Shahu Mahavidyalaya, Latur (Autonomous)

(Affiliated to Swami Ramanand Teerth Marathwada University, Nanded)

NAAC Accredited B++ Grade with CGPA 2.99 (Cycle-III), ISO:9001:2015, UGC-CPE (Phase-III), DST-FIST Status



[HOME](#) [ABOUT US](#) [ACADEMIC](#) [IQAC](#) [GALLERY](#) [AUTONOMY](#) [RESEARCH](#) [STUDENT CORNER](#) [ADMISSION](#) [ALUMNI](#) [SHAHU PORTALS](#) [LIBRARY](#) [CONTACT US](#)

[Home](#) [College Prospectus](#)

[Information Technology](#)

College Prospectus





College Magazine

[Sitemap](#) [Screen Reader Access](#) [Accessibility](#) [Lockdown Activities](#) [EVENTS](#)



Shiv Chhatrapati Shikshan Sanstha's Rajarshi Shahu Mahavidyalaya, Latur (Autonomous)

(Affiliated to Swami Ramanand Teerth Marathwada University, Nanded)

NAAC Accredited B++ Grade with CGPA 2.99 (Cycle-III), ISO:9001:2015, UGC-CPE (Phase-III), DST-FIST Status



[HOME](#) [ABOUT US](#) [ACADEMIC](#) [IQAC](#) [GALLERY](#) [AUTONOMY](#) [RESEARCH](#) [STUDENT CORNER](#) [ADMISSION](#) [ALUMNI](#) [SHAHU PORTALS](#) [LIBRARY](#) [CONTACT US](#)



[Home](#) > [College Magazine](#)

[Download](#)

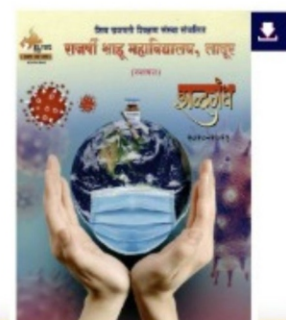
COLLEGE MAGAZINE



2022-23



2021-22



2020-21





e-Learning Resources

[Sitemap](#) [Screen Reader Access](#) [Accessibility](#) [Lockdown Activities](#) [EVENTS](#)



Shiv Chhatrapati Shikshan Sanstha's
Rajarshi Shahu Mahavidyalaya, Latur
(Autonomous)

(Affiliated to Swami Ramanand Teerth Marathwada University, Nanded)
NAAC Accredited B++ Grade with CGPA 2.99 (Cycle-III), ISO:9001:2015, UGC-CPE (Phase-III), DST-FIST Status



[HOME](#) [ABOUT US](#) [ACADEMIC](#) [IQAC](#) [GALLERY](#) [AUTONOMY](#) [RESEARCH](#) [STUDENT CORNER](#) [ADMISSION](#) [ALUMNI](#) [SHAHU PORTALS](#) [LIBRARY](#) [CONTACT US](#)

Home > e-Learning Resources

e-Learning Resources



DELNET Access Millions of Networked Library Resources through DELNET



N-LIST National Library and information Services Infrastructure for Scholarly Content



SWAYAM Online Courses



Green Initiatives

[Sitemap](#) [Screen Reader Access](#) [Accessibility](#) [Lockdown Activities](#) [EVENTS](#)



Shiv Chhatrapati Shikshan Sanstha's Rajarshi Shahu Mahavidyalaya, Latur (Autonomous)

(Affiliated to Swami Ramanand Teerth Marathwada University, Nanded)

NAAC Accredited B++ Grade with CGPA 2.99 (Cycle-III), ISO:9001:2015, UGC-CPE (Phase-III), DST-FIST Status



[HOME](#) [ABOUT US](#) [ACADEMIC](#) [IQAC](#) [GALLERY](#) [AUTONOMY](#) [RESEARCH](#) [STUDENT CORNER](#) [ADMISSION](#) [ALUMNI](#) [SHAHU PORTALS](#) [LIBRARY](#) [CONTACT US](#)

[Home](#) [GREEN INITIATIVES](#)

GREEN INITIATIVES



Tree Plantation

Trees are essentially human and other living organisms' livestock. They have unconditionally provided us with food, oxygen, and other necessities, such as shelter, medicines, tools, and so on. trees are still not properly cared for.

[CLICK ME](#)



Swachata Abhiyan

Swachh Bharat Mission, Swachh Bharat Abhiyan, or Clean India Mission is a country-wide campaign initiated by the Government of India in 2014 to eliminate open defecation and improve solid waste management.

[CLICK ME](#)



Health & Wellness



Shiv Chhatrapati Shikshan Sanstha's Rajarshi Shahu Mahavidyalaya, Latur (Autonomous)

(Affiliated to Swami Ramanand Teerth Marathwada University, Nanded)

NAAC Accredited B++ Grade with CGPA 2.99 (Cycle-III), ISO:9001:2015, UGC-CPE (Phase-III), DST-FIST Status



HOME ABOUT US ACADEMIC IQAC GALLERY AUTONOMY RESEARCH STUDENT CORNER ADMISSION ALUMNI SHAHU PORTALS LIBRARY CONTACT US

Home > Back > Health and Wellness Committee

ABOUT VISION MISSION SERVICES ACTIVITIES COMMITTEE PHOTO GALLERY

Health & Wellness Committee



Medical Officer
- Dr. Swati Suresh Fere

Wellness is much more than just being physically well, active, or eating right. It is the total integration of physical, mental, and spiritual well-being. Wellbeing occurs when all the body processes, physical and mental are functioning at peak levels or as the World Health Organization states: Now a day, may be surprising but the fact is that not only the staff but young blood –the students also are facing numerous physical and mental health issues like cardiac arrests, carpal tunnel syndrome, eye strain, anxiety, stress, and fear. To protect our staff and students from such problems, the Health and Wellness Committee has been working on this burning issue and plan various activities and programs periodically. The Health and Wellness Committee established in _____. Dr. Swati Suresh Fere is the Chairperson of the committee





Mail US

**RAJARSHI SHAHU MAHAVIDYALAYA, LATUR
(AUTONOMOUS)**

📍 Opp. Central Bus Stand, Kaku Seth Ukka Marg, Chandra Nagar, Latur-413512

✉ principal@shahucollegelatur.org.in

☎ 02382 - 245 933

MAIL YOUR QUERIES

Name

Phone

Address

E-mail

Subject

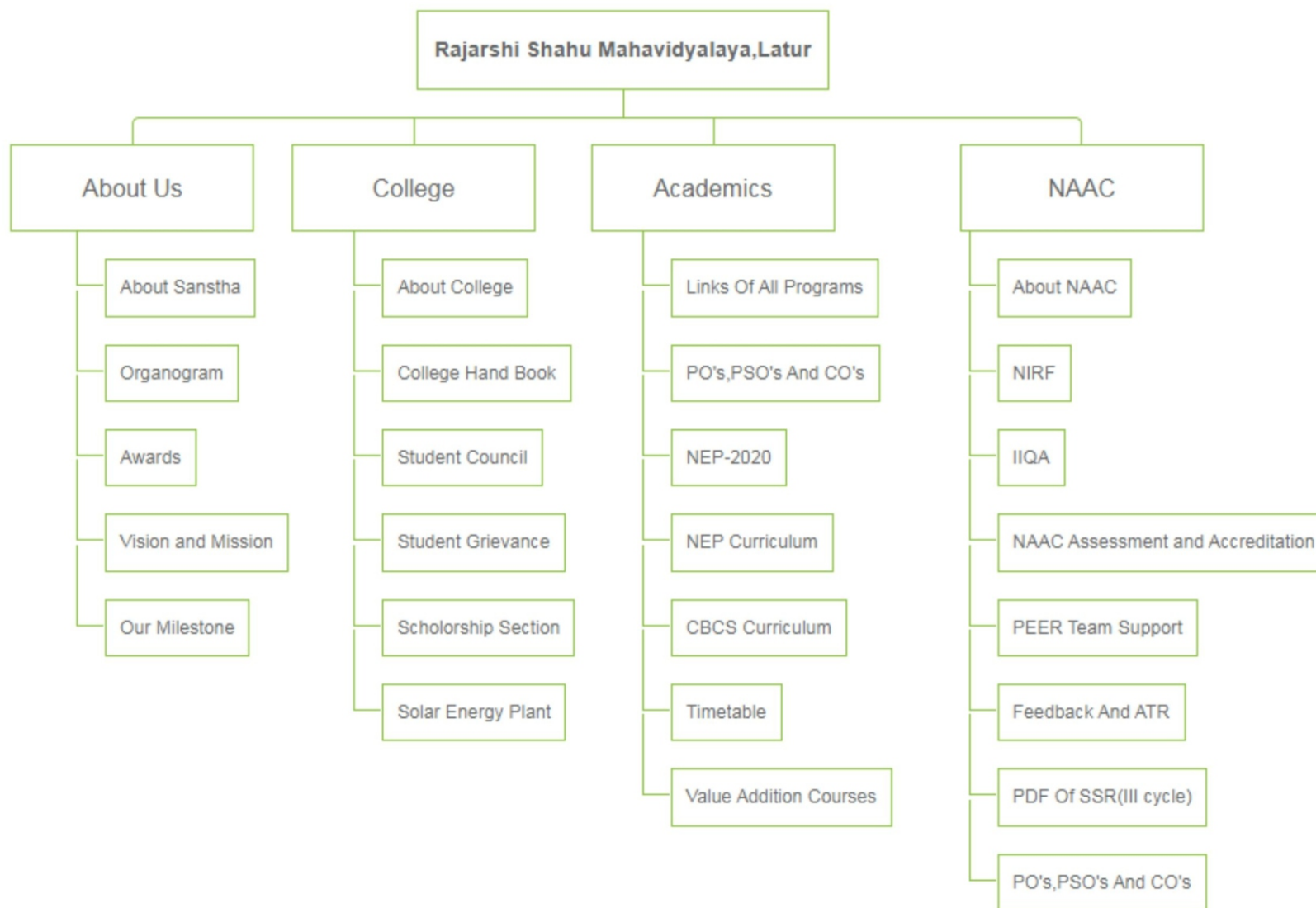
Message

Submit

Reset



Site Map





Reach US





Admission / Registration

Home › Admission

Online Payment

Admission / Registration 2023-24





Student Corner

MANAGY LINE

Student Notices

Student Corner



Office Section



Our Toppers



Placement Cell



Examination



Library



Manasrang



Important Links



Fee Structure



Scholarship
Section



Alumni



Academic
Calendar



NEP Curriculum



Student Council



Degree Courses



Shahu News



College Magazine



Photo Gallery



Complaint Box



Virtual Tour



Sports



NSS



NCC (Girls)



NCC (Boys)



Events



RSMWiseVision
Blogs



Online
Certification
Courses



Our
Milestones



Student
Association



Virtual Tour



VIRTUAL TOUR



Lockdown Activities

Lockdown Activities

Co-Curricular



View

Extra-Curricular



View

Educational



View



We In Society

We In Society



TREE PLANTATION

Trees are essentially human and other living organisms' livestock. They have unconditionally provided us with food, oxygen, and other necessities, such as shelter, medicines, tools, and so on. trees are still not properly cared for.

[view](#)

BLOOD DONATION

Blood donation refers to a practice where people donate their blood to people so it helps them with their health problems. Blood is one of the most essential fluids of our body that helps in the smooth functioning of our body.

[view](#)

WATER CONSERVATION

Water is the important component of our lives. When we become thirsty, we drink water; bathe and cook with water. Even though we are heavily dependent on water for many purposes, most of us do not face any hardship in obtaining it.

[view](#)



Divyangjan : Screen reader access

Home › Divyangjan

About

Registration

Notices and
Documents

Contact us

Divyangjan

Policy Document for Disabled Friendly and Free Barrier Free Environment [Click Here](#)

1. Preliminary

The Persons with Disabilities Act 1995 indicates that differently-abled persons should have access to education at all levels. Right of Persons with Disabilities Act 2016 prohibits discrimination against individuals with physical and mental disabilities. In view, the College has created Disability Support Facilities (DSF) to provide access to the differently abled students for varied programs, services, activities, etc. The College strives to create accessory and homely ambience and facilities for these students. It takes care to nurture them right from their beginning to exit from the College.

Rajarshi Shahu Mahavidyalaya (Autonomous), Latur recognizes the importance of creating a climate of understanding and mutual respect to cater for the dignity and worth of each person, so that they contribute whole heartedly to the development of Self, Institute, Society and Country at large. The College considers it, an honour to serve the differently abled members of the community. The specific policy has been formulated to keep the campus disabled friendly, and to take every possible measure to provide a barrier free environment and holistic development of Divyangjan.

WEB DEVELOPMENT

